

# Software

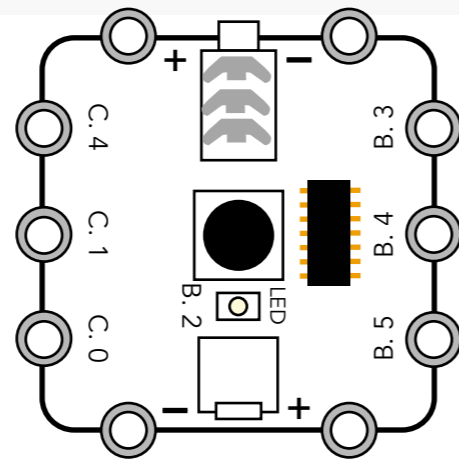
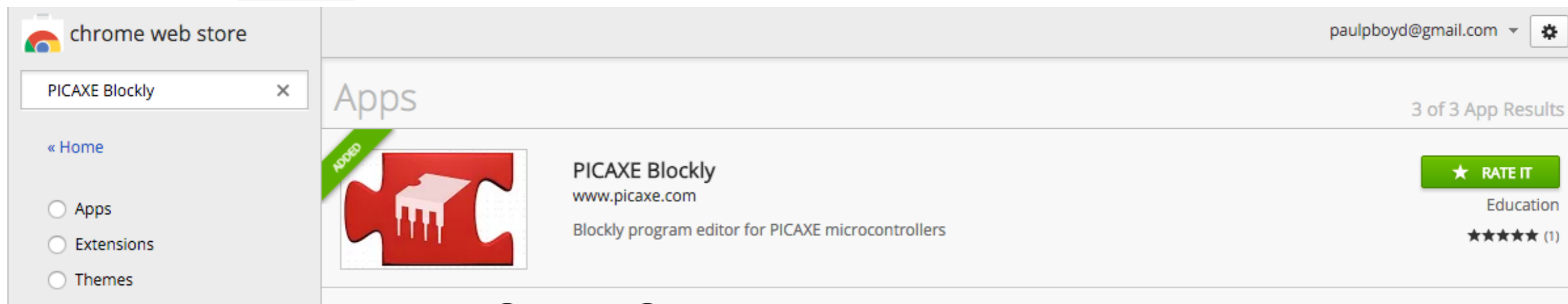


Web Store

**NOTE: Don't attach the lead to your computer until you install the software download**

If you don't already have Google Chrome loaded you will need to do this first

Once loaded you will need to go to the Web Store and search for PICAXE Blockly and follow the instructions to install the software. There is also a desktop version of the software for Windows PC but I have been using the Web version as it allows students to work at home as you can save programmes to your Google account. Once installed it will appear in your Apps list by clicking on the icon:



**NOTE: Don't attach the lead to your computer until you install the software download**

To enable you to connect your IGLOO to the computer you will need the PICAXE USB Download Cable (Product Code: 3716 <https://www.kitronik.co.uk/3716-picaxe-usb-download-cable.html>) and you will need to download the drivers for the cable.

<http://www.picaxe.com/Software/Drivers/AXE027-USB-Cable-Driver#tResources> or directly from

PC Windows: [http://www.picaxe.com/downloads/axe027\\_installer.exe](http://www.picaxe.com/downloads/axe027_installer.exe)

MAC: [http://www.ftdichip.com/Drivers/VCP/MacOSX/FTDIUSBSerialDriver\\_v2\\_2\\_18.dmg](http://www.ftdichip.com/Drivers/VCP/MacOSX/FTDIUSBSerialDriver_v2_2_18.dmg)

**Restart your computer and then connect the cable and the IGLOO**

